



This is to certify that the Environmental Management System of

CHUN WO BUILDING CONSTRUCTION LIMITED
俊和建築有限公司

C2, 5/F, Hong Kong Spinners Industrial Building, 601-603 Tai Nan West Street, Cheung Sha Wan, Kowloon, Hong Kong
香港九龍長沙灣大南西街 601 至 603 號香港紗廠工業大廈 C2 五樓

complies with the requirements of **ISO 14001 : 2015** environmental management system standard,
applicable to:

- Design and construction of buildings, include alteration and addition works
- Interior design and fitting out works
- Building activities to keep, restore and improve the facilities of buildings and surroundings
- Demolition design and demolition of buildings; Design and construction of roads and drainage
- Supply, installation, repair and maintenance of plumbing work
- Production of precast concrete elements
- 樓宇的設計和建造包括改動和加建工程
- 室內設計和裝飾工程
- 樓宇保養、維修和改善工程
- 樓宇拆卸的設計和執行、道路和渠務的設計和建造
- 水管工程的物料供應、安裝和維修保養
- 混凝土預製件的生產

Signed for and on behalf of

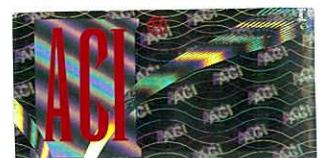
ACCREDITED CERTIFICATION INTERNATIONAL LIMITED

Secretary

Board Member



Registered address: Unit 1901, Yen Sheng Centre, 64 Hoi Yuen Road, Kwun Tong, Kowloon, Hong Kong
Tel (852) 39778988 Fax (852) 28061940 Email:enquiry@aci-limited.com Website: www.aci-limited.com
Note: This certificate remains the property of Accredited Certification International Limited and shall be returned immediately upon request. In accordance with the ACI Regulations, the ACI undertakes no liability or responsibility for any management system outputs supplied in accordance with the requirements of this Certification Scheme. The accreditation logo indicates HKAS accreditation in respect of those activities of ACI covered under registration number HKCAS 011. Further clarifications regarding the scope of this certificate and the applicability of ISO 14001: 2015 requirements may be obtained by consulting the organization. The original certification hereunder indicates the date of certification granted by previous certification body.



To check the validity of certificate, please call: (852) 39778988